

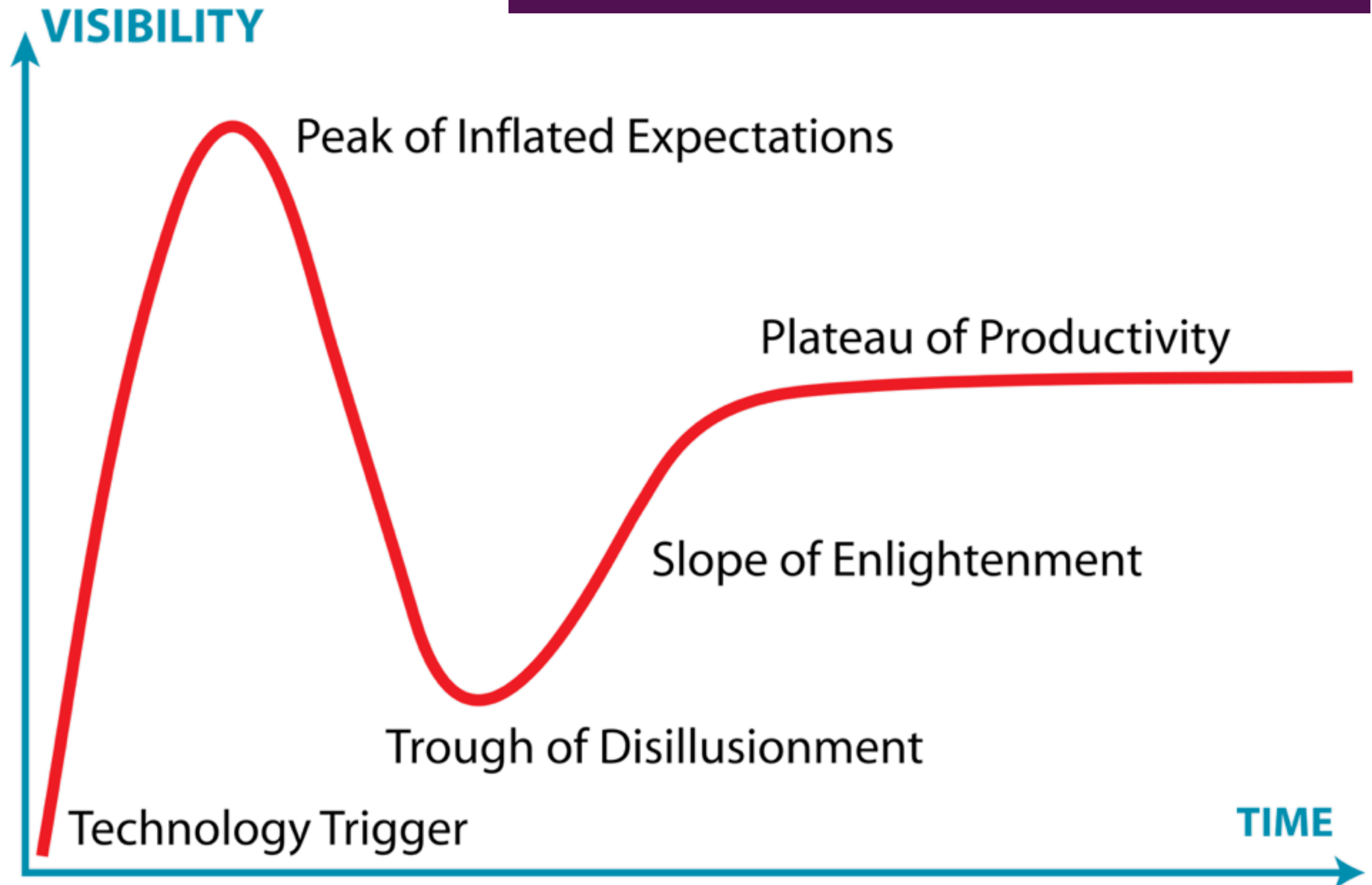


# Mobile Learning infoKit

JISC  
infoNet

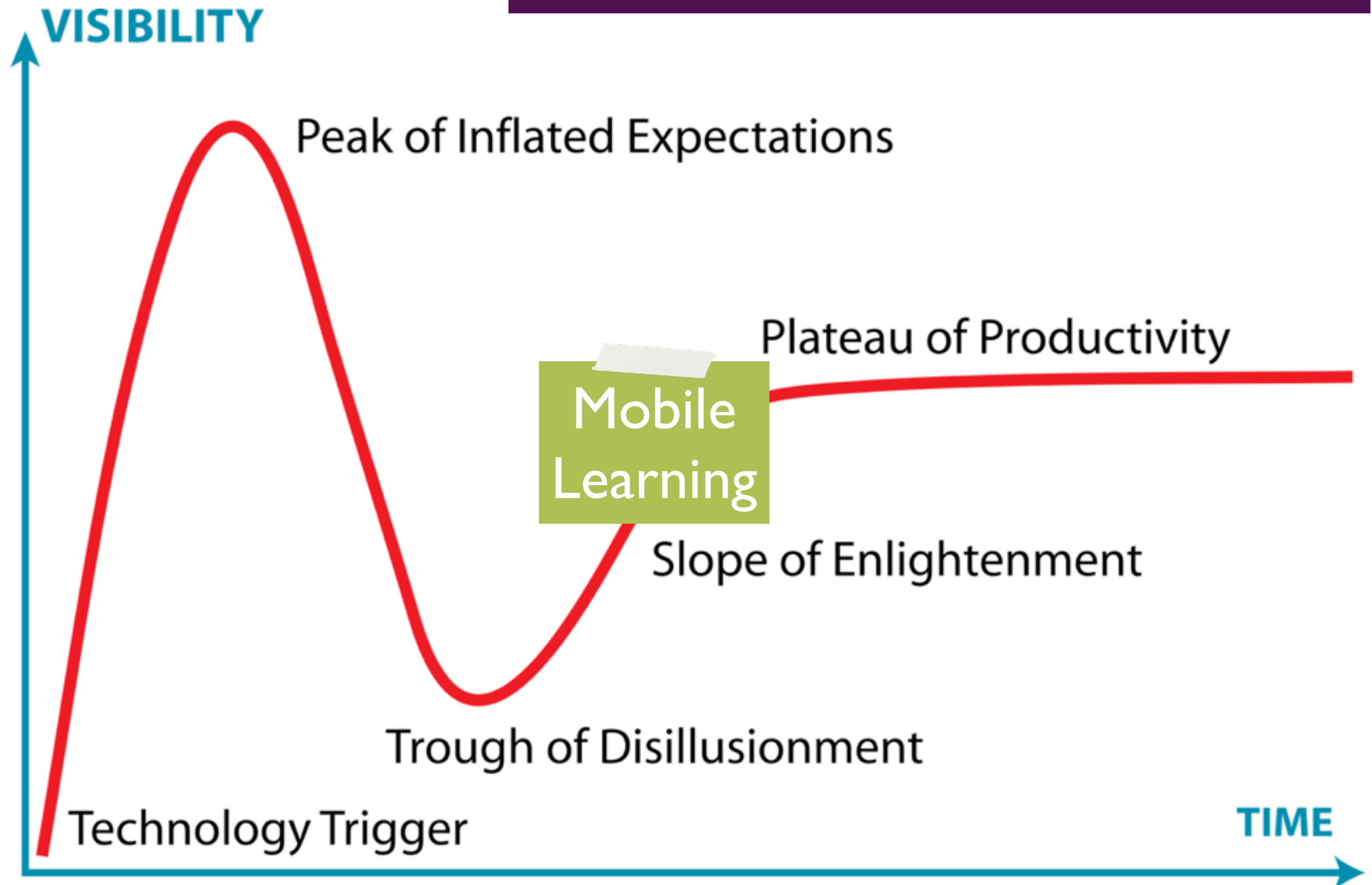


# Gartner's Hype Cycle





# Gartner's Hype Cycle



*“New generations of young people who have grown up with digital technology have **high expectations** of anytime, anywhere learning, but many learners do not have a clear understanding of how courses could or should use technology to support learning. They are still very much reliant on lecturers for guidance.”*

HOW SHOULD  
EDUCATIONAL INSTITUTIONS  
**RESPOND?**

JISC

## Emerging Practice in a Digital Age

A guide to technology-enhanced institutional innovation



JISC's publication  
'Emerging Practice  
in a Digital Age' is  
a guide to  
technology-  
enhanced  
institutional  
innovation.

<http://jisc.ac.uk/digiemerge>



JISC

## Emerging Practice in a Digital Age

A guide to technology-enhanced institutional innovation



JISC infoNet's  
Mobile Learning  
infoKit **augments**  
JISC's 'Emerging  
Practice in a  
Digital Age'  
publication.

<http://jisc.ac.uk/digiemerge>

**Why  
MOBILE  
learning?**

Encourages time-management

FITS INTO THE LIVES OF LEARNERS

# CONTEXTUALISATION

Enables new learning environment

BITE-SIZED LEARNING CONTENT

Encourages reflection close to learning event

IMMEDIACY OF COMMUNICATION

PERVASIVE AND UBIQUITOUS

PROMOTES ACTIVE LEARNING

**More learner-centred**

Personal, private and familiar

Portable

ACCESS TO MENTORS, TUTORS AND OTHERS

**User-generated content**

Increased accessibility for various groups of learners



# Why MOBILE learning?

*“Looking at mobile learning in a wider context, we have to recognize that mobile, personal, and wireless devices are now **radically transforming** societal notions of discourse and knowledge, and are responsible for new forms of art, employment, language, commerce, deprivation, and crime, as well as learning.”*

TRAXLER (2007)

VIEW EDIT

# Home

last edited by Doug Belshaw 3 minutes ago

Page history

The Mobile Learning infoKit is a developing resource from [JISC infoNet](#) launched at ALT-C 2011 alongside the new JISC publication *Emerging Practice in a Digital Age* (September 2011). Augmenting the *Emerging Practice* guide, this infoKit is a practical guide for educational institutions planning to implement a mobile learning initiative.

At launch, the Mobile Learning infoKit comprises a wiki-based resource collating information and guidance from JISC and other sources. It will develop to include a section on future trends, incorporate additional examples, and be made available in a variety of formats.

If you would like to suggest an addition or provide feedback, please get in touch with Doug Belshaw ([doug.belshaw@northumbria.ac.uk](mailto:doug.belshaw@northumbria.ac.uk))

Curious about the [bee motif](#) on the InfoKit?



JISC's [Emerging Practice in a Digital Age](#)

PDF version

Create a page

Upload files

Invite more people

Share this page

Put this page in a folder

Add Tags

Control access to this page

Copy this page

## SideBar

### Introduction

- [Acknowledgements](#)
- [Overview](#)
- [What is mobile learning?](#)
- [Why mobile learning?](#)
- [Mobile learning myths](#)
- [Glossary](#)

### Strategy

- [Overview](#)
- [Quick wins](#)
- [Learner expectations](#)
- [Cultural considerations](#)
- [Sustainability](#)

### Pedagogy

- [Frameworks for mobile learning](#)
- [Learning and teaching considerations](#)
- [The importance of context](#)

### Implementation

- [Technical considerations](#)
- [Accessibility](#)
- [Cost/benefit](#)
- [Overcoming barriers and finding enablers](#)
- [10 steps to mobile learning adoption](#)
- [Evaluation](#)

### Snapshots

- [University of Bradford](#)
- [University of Leeds Medical School](#)
- [Mimas](#)

# CONTENTS:

## Practical, focused advice

What is  
**MOBILE**  
learning?

The exploitation of ubiquitous handheld hardware,  
wireless networking and mobile telephony to

**FACILITATE**  
**support**

ENHANCE AND EXTEND THE REACH OF  
**teaching and**  
**LEARNING.**



## What is **MOBILE** learning?

*“Early definitions of [mobile learning], which focused predominantly on the attributes of mobile technology, have given way to more sophisticated conceptualisations suggesting that **mobility is the central issue...***

*This denotes not just physical mobility but the opportunity to overcome physical constraints by having access to people and digital learning resources, regardless of place and time.”*

KUKULSKA-HULME (2010)

# Mobile Learning Myths

“There are no consistent standards for mobile learning”

“The screens are too small”

# Mobile Learning Myths

“Mobile devices are a distraction!”

“Students with disabilities cannot use mobile devices for learning”



“HTML5 and other web standards are mobile-friendly”

“Mobile learning is all about *context*”

# Mobile Learning Myths

“Distraction is nothing new to learning!”

“Mobile devices enable greater personalisation for disabled students”

**KEY  
WORDS  
IN  
MOBILE  
LEARNING**

**KEY**  
**WORDS**  
**IN**  
**MOBILE**  
**LEARNING**

**CONTEXT**



**KEY**  
**WORDS**  
**IN**  
**MOBILE**  
**LEARNING**

**CONTEXT**

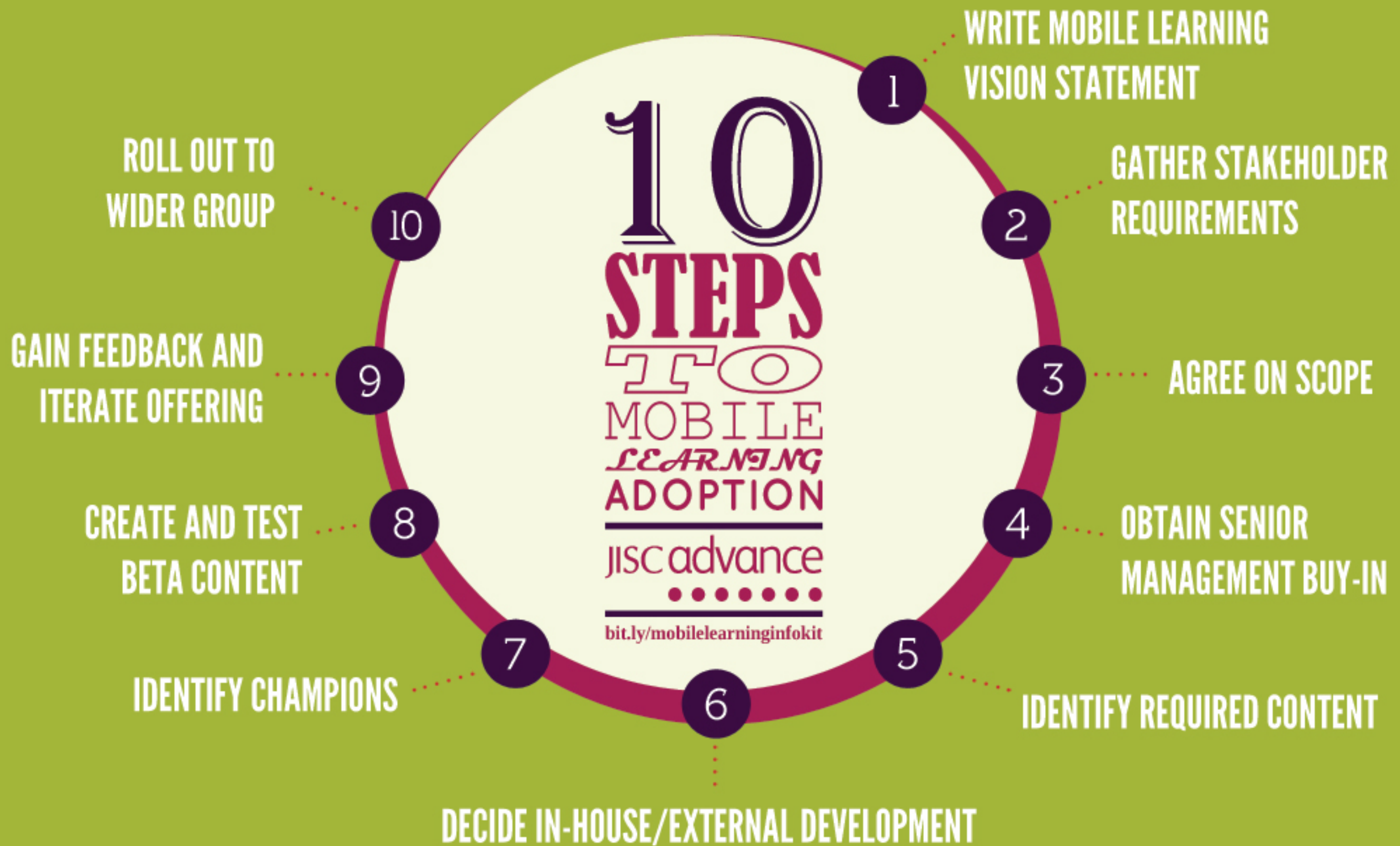
**CULTURE**

*“A major task for educational **evaluation** is to identify and analyse learning within and across contexts. For mobile learning, the interest is not only in how learning occurs in a variety of settings, but also how people create new contexts for learning through their interactions and how they progress learning across contexts.”*

EVALUATION

**HOW**  
**DO**  
**WE**  
**GET**  
**STARTED**





# Quick Wins



Set up social  
media accounts

 **Quick Wins**

Set up social  
media accounts

# Quick Wins

Turn on mobile  
version of VLE, etc.

Set up social  
media accounts

Invest in secure  
SMS text messaging

## Quick Wins

Turn on mobile  
version of VLE, etc.

**SNAP**  
**SHOTS**

**CO-ORDINATION  
IS IMPORTANT**

**ITERATION  
IS KEY**

**CULTURAL CHANGE  
CAN BE DIFFICULT**

*“We tried to do something  
a little bit different.”*





UNIVERSITY OF LEEDS

**GAIN FEEDBACK  
ON YOUR PLANS**

**SPECIFY THE  
PROBLEM**

**MOBILE LEARNING  
IS A TROJAN HORSE**

*“We really were  
starting from scratch!”*

**PROVIDE THE  
BUSINESS CASE**

**EXPERIMENT**

**WORK IN  
PARTNERSHIP**

*“It's having a combination  
of staff with the right skills.”*



<http://bit.ly/mobilelearninginfokit>

# Mobile Learning infoKit

JISC  
infoNet

JISC

## Emerging Practice in a Digital Age

A guide to technology-enhanced institutional innovation



<http://jisc.ac.uk/digiemerge>

